

Maple Leaf Square Towers

Toronto, Ontario



Pre-assembled beam being lowered into position after just-in-time delivery

Maple Leaf Square consists of 1.8 million square feet of living, working and playing space covering 2.1 acres. The project has 8,500 tonnes of rebar embedded in 2.7 million cubic feet of concrete held in place by 3.7 million square feet of formwork. Two towers rise 600 feet, or 65 stories above an excavation 50 feet below Lake Ontario that yielded 10.2 million cubic feet of earth.

Salit Steel supplied the rebar along with specially designed pre-assembled beams and columns for poured-in-place concrete components of the towers. The beams and columns were pre-assembled inside Salit's Welland facility in a controlled environment with no weather restrictions. The assemblies were all tied, not welded according to the Reinforcing Steel Institute of Ontario Manual of Standard Practice (tying of reinforcing steel). The concrete pour schedule was very aggressive and

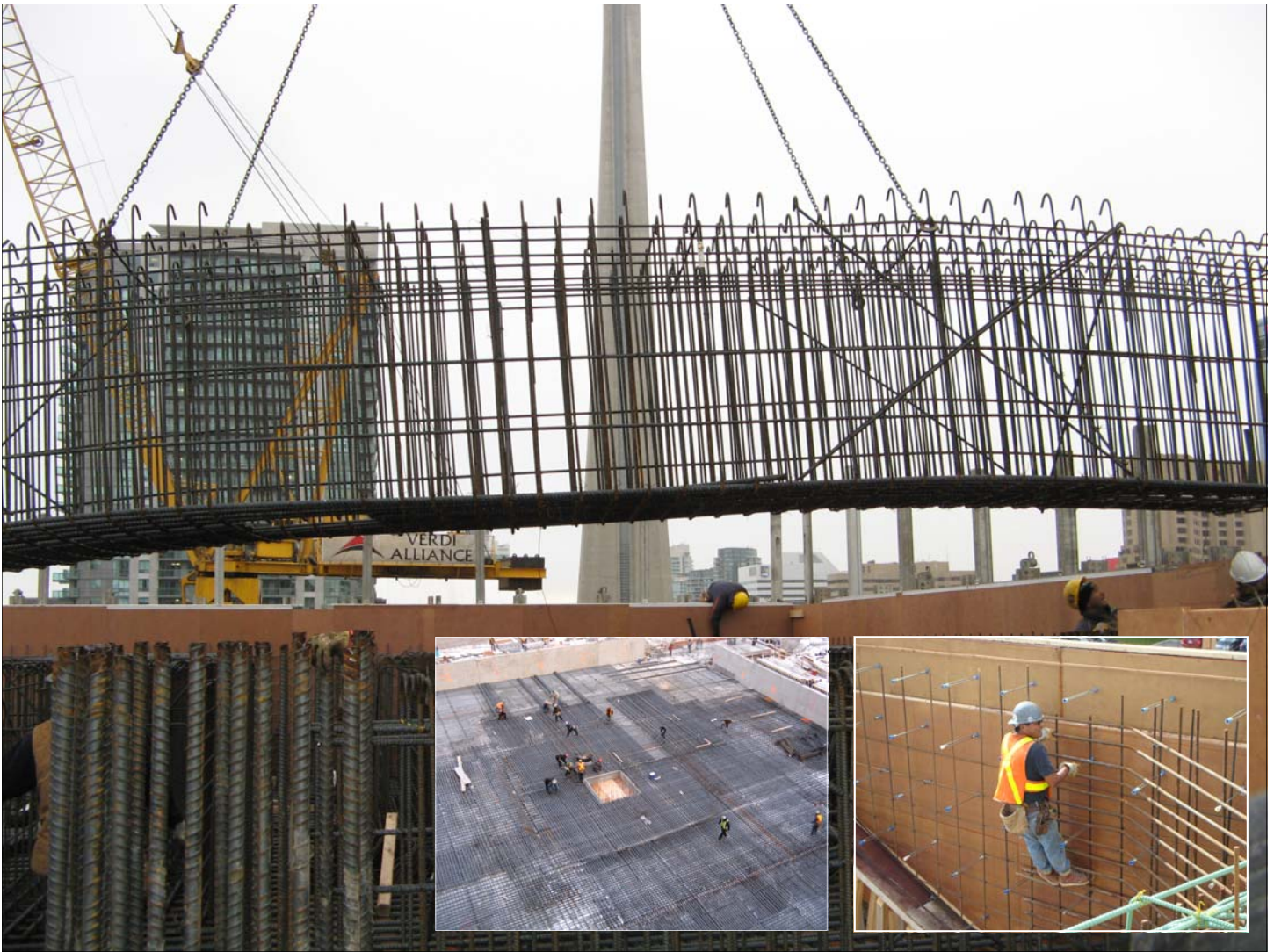
SALIT STEEL

*Rebar when you want it.
Rebar when you need it.*

Sales Office
84 Main Street East
Grimsby Ontario L3M 1N3
www.salitsteel.com

T:(free) 866-434-0067 x 5392
T: 905-309-2392
F: 905-309-0344
lkruysen@salitsteel.com





the project had fallen behind. The only way to speed up construction was to pre-assemble the columns and beams offsite and deliver on the same day they were ordered. There was no room on site to allow for pre-assembly of beams or columns. Onsite rebar tying was undertaken by SRI Installations.

The project includes:

- 872 condominiums
- A 169-room sports and entertainment themed LeGermain Boutique Hotel
- 230,000-square feet of LEEDS certified office space, and 110,000-square feet of retail space
- A 24,000-square foot hi-tech world class sports bar and a fine-dining establishment
- A 1,700-square foot hi-definition theatre
- A sports retail store, a 7,000-sq. ft. daycare centre, and a public plaza to accommodate 5000 people.

The west side of Air Canada Centre was rebuilt to widen the inside concourse and connect to Maple Leaf Square. PLC Constructors Inc. was the construction manager for the project. Jablonsky Associates and Partners was the structural engineer and the Atlas Corporation the site work contractor.

